

scan x trek 



**ScanX Trek™**  
**Portable, Durable, Rugged.**  
**Perfectly Suited for the Rigors of**  
**Work in the Ambulatory Practice.**

 **ALLPRO** IMAGING



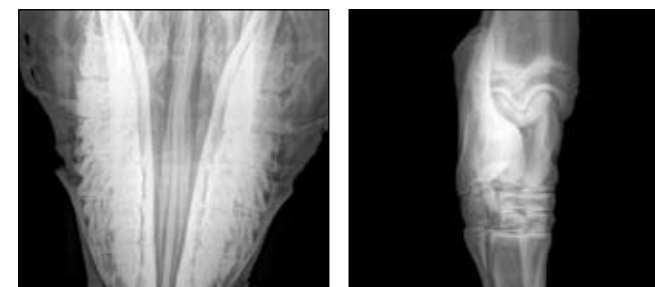
# The most portable, lightweight digital imaging system on the market.



## Premium quality images in seconds.

You need a diagnostic quality image fast — without the need to return for retakes. Thanks to the ScanX Trek, that's never been easier.

ScanX Trek is the lightest, most portable and rugged digital imaging system in the industry. Developed exclusively for the Equine Veterinarian by ALLPRO Imaging, ScanX Trek produces high-resolution digital images in as little as 35 seconds. Equine veterinarians can take more images and make a diagnosis on the spot, while eliminating the need to chemically process X-rays or return to the stable or barn for retakes.



## Engineered for ease and speed.

ScanX Trek is especially easy to operate. Imaging routines are familiar because ScanX Trek utilizes techniques you already use. It takes just three simple steps; Expose, Insert and View. ScanX Trek utilizes durable, reusable phosphor storage plates (PSPs), which are coated with an X-ray sensitive photostimulable material. Just expose the PSP with your existing X-ray system. Upon exposure to X-rays, the plate stores the latent image which is then scanned by the ScanX Trek and erased in one continuous cycle by the patented in-line erase feature. The plate is immediately ready for reuse and the image is available on your laptop in seconds.

## Built for durability and economy.

ScanX Trek is perfectly suited for the rigors of the ambulatory practice. The cushioned, lightweight extruded aluminum frame helps to resist dents. Sturdy, rubberized feet eliminate potential image quality issues due to vibration. And, a built-in rechargeable battery option and DC power port enable operation in virtually any setting. ScanX Trek is an exceptional value. Optional carrying options include a soft-sided or hard-sided case. This system eliminates the need for a darkroom and film processing equipment, as well as the recurring costs of maintenance and chemicals. And, PSPs are reusable thousands of times and are more robust and less expensive than direct panel systems. ScanX Trek has a much faster return on investment due to the significantly lower initial cost compared to other systems on the market.

## Enhance images — and communication.

Comprehensive, easy-to-use imaging software is available and allows you to enhance details on your computer. Images can be enlarged, magnified, inverted and sharpened, unlike traditional film. They can be stored for easy retrieval or shared with other professionals, and with pet owners, to help educate them on the injury and treatment plan.

## Workflow with Trek



1. Take an X-ray as you normally do, using a reusable PSP in place of film.



2. Easily feed plate into the ScanX Trek.



3. Image is available for viewing in only 35 seconds.



4. Enhance the image to optimize detail for easier diagnosis and consulting.



5. Save the image to your computer; burn a CD or send to a colleague.

## ScanX Trek at a glance.

- ▶ The only truly portable digital imaging system suited for rigors of work on the road.
- ▶ Largest imaging area on the market; up to 14" x 17".
- ▶ High-resolution images are available in seconds for on-the-spot diagnosis.
- ▶ Optional carrying options include soft and hard sided cases.
- ▶ Built-in rechargeable battery option; up to 4-hour run time.
- ▶ Triple-cushioned, shock-resistant panels resists dents.
- ▶ Strong, lightweight extruded aluminum frame is structurally sound.
- ▶ Sturdy, rubberized feet eliminate potential image quality issues due to vibration.
- ▶ Operates with major brands of imaging software; choose the software that best fits your application.
- ▶ Easily optimized for specific operations.

Fast, Accurate, Affordable Digital Imaging.  
Call 888-862-4050 today to locate an authorized  
ALLPRO Imaging dealer near you,  
or visit [www.allproimaging.com](http://www.allproimaging.com)



**Specifications**

Dimensions: 15 1/2"W x 18" L x 14" H  
 Weight: 40 lbs. (without battery) 42 lbs. (with battery)  
 Electrical: 50/60 Hz 110-240 Vac.  
 Laser Classification: Class I Laser Product. Compliance with FDA HHS 21 CFR 1040.10 and IEC 60825-1.  
 Imaging Media: Phosphor Storage Plates, all brands. All standard and custom sizes.  
 System Includes: Power supply and USB Cable.  
 Software: Compatible, third party software recommended (not included).  
 Part Numbers: ScanXTrek D5000-T  
 ScanXTrek D5000-TB (w/ battery)

**Computer Recommendations**

CPU Speed: 3.0 GHz Intel CORE2  
 Operating System: Microsoft Windows XP Professional (for a 32-bit Intel processor with Service Pack 2 or later or for a 64-bit Intel x64 processor) Microsoft Vista Business, Enterprise, or Ultimate (for a 32-bit Intel processor with Service Pack 1 or later or for a 64-bit Intel x64 processor with Service Pack 1 or later).  
 RAM: 2 GB  
 Hard Drive: 500 GB  
 Optical Drive: Optical drive that is CD-Rom compatible.  
 Monitor: SVGA 20", 1024x768 or higher resolution, contrast ratio 450:1, .22 dot pitch recommended.  
 Video Display Port: 32 MB RAM  
 Keyboard / Mouse: Standard keyboard and mouse.  
 USB Port/Version: USB 2.0 or later.  
 Other: Surge protector and backup device.



The ScanX Trek digital imaging system was developed by ALLPRO Imaging, a leading manufacturer of imaging systems dedicated to the medical, veterinary, security and industrial markets for nearly 50 years. ALLPRO maintains a 200,000 square-foot manufacturing facility in New York, and a network of authorized ScanX Trek dealers.



1295 Walt Whitman Road  
 Melville, New York 11747-3062  
 Phone: 516.433.7676 Fax: 516.433.7684  
 Toll Free in the U.S. and Canada: 888-862-4050

**Authorized ALLPRO Imaging Dealer**

